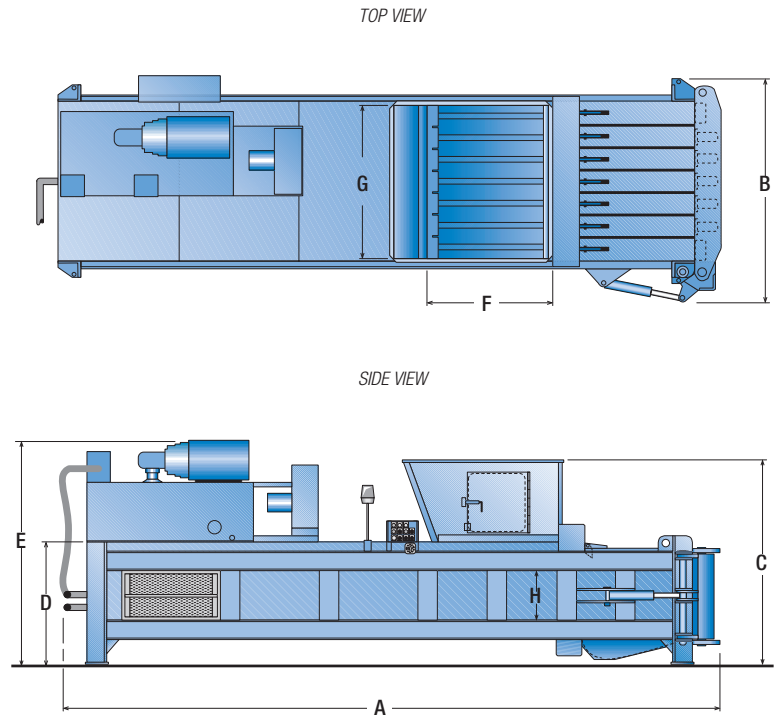


Atlas ET® Non-Ferrous Horizontal Balers

Specifications	Atlas ET
Nominal Bale Size	48" x 60" x 30" 1219mm x 1524mm x 762mm
Performance	
Maximum System Pressure	3000 psi 207 bar
Maximum Platen Force	235,600 lbs. 1048 kN
Maximum Platen Pressure	139 psi 958 kPa
Cycle Time (partial penetration)	22 sec
Weight (dry)	28,000 lbs. 12701 kg
Electrical Equipment	
Electrical Motor 3/60-208/230/460	50 hp 37 kW
Electrical Control Voltage	120 VAC
UL® and CUL® listed	
Hydraulic Equipment	
Pump Type	Vane
Pump Capacity	94 gpm 356 lit/min
Reservoir	200 gal. 757 lit.
Hydraulic Cylinder (Bore)	10" 254mm
Hydraulic Cylinder (Rod)	7" 178mm
Hydraulic Cylinder (Stroke)	96" 2438mm

Dimensions:



Dimensions	A	B	C	D	E	F	G	H	Clear Top Opening
	Overall Length	Overall Width	Overall Height	Body Height	Height with Power Unit	Charge Box Length	Charge Box Width	Charge Box Height	
Atlas ET	22'-7" (6883mm)	7'-6 1/2" (2299mm)	6'-8" (2032mm)	48 1/2" (1232mm)	92 5/8" (2352mm)	45" (1143mm)	60" (1524mm)	29" (737mm)	45 1/4"L x 57 1/4"W (1149mm x 1454mm)

Please refer MarathonEquipment.com for the online brochure with the most up-to-date information.

Authorized Dealer:



Marathon Equipment Company
 P.O. Box 1798
 Vernon, AL 35592-1798
 800.633.8974
www.marathonequipment.com
 NJPA Contract #060612-ESG



www.doveresg.com



Pictures in this literature are illustrative only. Specifications are subject to change without notice in order to accommodate improvements to the equipment. Complies with ANSI standard Z245.5 and applicable OSHA Regulations. Products must be used with safe practice and in accordance with said regulations and standards.



Atlas ET Non-Ferrous Horizontal Balers

Marathon's Atlas balers are the most affordable, highly efficient, mid-size balers for the non-ferrous scrap industry.

Atlas ET Baler

Standard Features and Benefits

- Heavy construction – perfect for the scrap industry.
- The Atlas Series features stress-engineered construction for a superior size to weight ratio.
- Vertical tie-off – allows for baling without pre-processing – with 6 tie positions. Wire guides for quick and easy ties – tie through the bale chamber door.
- Multiple hopper configurations available, including 3-sided, extra wide, skid-steer hopper.
- Produces a 48-inch x 60-inch x 30-inch (1219mm x 1524mm x 762mm) size bale.
- The programmable UL and CUL Listed controller permits automatic or manual cycling.
- The full penetration ram provides maximum compaction and full ejection.
- Dual interlock on the bale chamber door.
- Optional above-ground or pit conveyor available.



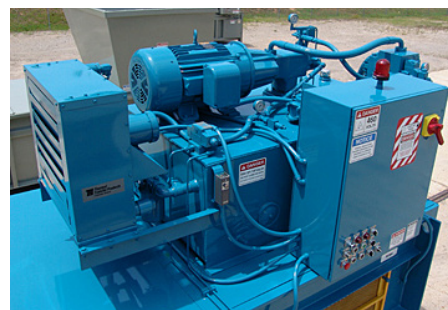
The Atlas ET (extra tough) features 500BHN liners, S-7 hardened steel ram and body shear blades for tough application requirements.



Marathon's Atlas ET Balers feature a hydraulic door latch.



The touchscreen enables full automatic and manual control with one touch. Screens may be customized, password protected, and are designed with alarm, diagnostic, and help screens.



High-efficiency power unit and electrical disconnect.



**Environmental
Solutions Group**

A DOVER COMPANY